



julia farwell-clay



hiro petite

Named for the main character in Neal Stephenson's novel Snow Crash, the title of which describes the way colors fade into each other in the yoke of this sweater



Finished Sizes:

4 (6, 8, 10, 12, 14) years; 23 (25, 27, 29, 31, 33)" chest.

Gauge:

18 sts / 24 rows to the 4" square in St st using larger needles. note: Some knitters find their gauge differs between working flat and in the round, and between St st and stranded work. To save time and ensure accurate sizing, check gauge for all methods and adjust needle size accordingly.

Yarn:

Mad Color Indulgence [100% Superwash Merino 215 yards/125g] 2 (2, 3, 3, 4) skeins MC (Pharaoh's Gold)
1 skein each CC1 & CC2 (Pink Tourmaline & Margaritaville)

Needles:

5mm / US 8 circular needle in length to knit body; set of 4mm / US 6 double point or magic loop needle to knit sleeve and neck ribbings; set of 5mm / US 8 double points or magic loop needle to knit sleeves in the round.

Notions:

2 stitch markers, 4 x 12" lengths of contrast smooth yarn or st holders, darning needle, 5 (5, 5, 6, 6, 6) ¾" buttons.

Special Stitches:

Seed Stitch

Worked in the round, even number of sts

Row 1: [k1, p1], repeat.

Row 2: [p1, k1], repeat.

Repeat rows 1 and 2.

Worked flat, even number of sts:

RS: [k1, p1], repeat.

WS: [p1, k1], repeat.

Worked flat, odd number of sts:

RS: [k1, p1], repeat to last st, k1.

WS: [k1, p1], repeat to last st, k1.



Sleeves

Using smaller needle and Color 2, CO 28 (28, 32, 32, 36, 36) sts, place marker and join to work in the round taking care not to twist sts. Work Seed St in the round for 8 rounds.

Switch to larger needle and knit 2 rounds in St st. Follow Sleeve Chart until complete adding Main Color when required, working 7 (7, 8, 8, 9, 9) chart repeats around sleeve. When chart is complete, continue in MC only.

AT SAME TIME:

When sleeve measures 2" from CO edge, begin sleeve increases in this way: k1, m1, work to last st before marker, m1, k1. Continue to work increases in this way, incorporating new sts into chart as required, every 7 (7, 7, 8, 8, 8) rounds until there are 44 (44, 48, 50, 52, 54) sts. Work even until sleeve is 10.5 (11.5, 12.5, 13.5, 15, 16)" long. Knit to last 3 (3, 3, 4, 4, 4) sts before the marker, place next 6 (6, 6, 8, 8, 8) sts on holder, removing marker as you come to it. Cut yarn, leaving 12" for grafting underarm sts later.

Place rem 38 (38, 42, 42, 44, 46) sleeve sts on holding needles and set aside.

Yoke

Join Sleeves to Yoke:

Starting with RS facing, knit across right front to last 3 (3, 3, 4, 4, 4) sts before the marker. Place next 6 (6, 6, 8, 8, 8) sts on scrap yarn or a holder, and knit across first sleeve sts from holder. Knit across back sts to last 3 (3, 3, 4, 4, 4) sts before the marker. Place next 6 (6, 6, 8, 8, 8) sts on scrap yarn or a holder, and knit across second sleeve sts from holder. Knit left front body sts: 162 (172, 188, 194, 208, 220) sts total.

For size 4 only, Next row (WS): Purl.

For sizes 6, 10, 12, 14 only, Next row, adjust sts to fit chart (WS). Purl, increasing 0 (2, -, 4, 2, 2) sts evenly across. - (174, -, 198, 210, 222) sts

Body

Using smaller needles and MC, CO 114 (124, 132, 142, 152, 160) sts. Do not join. Working back and forth, work Seed St for 8 rows, changing to larger needle on last row. Place side markers 30 (32, 34, 37, 40, 41) sts in from either edge. With RS facing, work in St st for 4 rows.

Next row, begin side decreases (RS): *k to 3 sts before marker, k2tog, k1, slip marker, k1 ssk; repeat from *, k to end of row. 4 sts decreased.

Work decreases in this manner every 12 (14, 14, 16, 18, 18) rows 3 more times. 98 (108, 116, 126, 136, 144) sts. Work even until body measures 10 (11, 12, 13, 14, 15)".

For size 8 only, Next row (WS): Purl, decreases 2 sts evenly across: 186 sts.

Work 0 (0, 2, 4, 2, 6) rows even.

Begin chart: Next row (RS): Work Chart A (A, A, A, B, B) across.

Note: Some rows have intentional partial repeats as the pattern st multiple changes. Be sure to pay attention to pattern repeat (red line) in chart, working any extra sts at the end as a partial pattern repeat.

Work chart using contrast colors as indicated through row 14 (14, 14, 14, 16, 16).

Row 15 (15, 15, 15, 17, 17) (RS): Working colors as indicated by the chart, *k2, k2tog to last 2 sts, k2. 122 (131, 140, 149, 158, 167) sts.

Work as set until row 24 (24, 24, 24, 26, 26) is complete. Row 25 (25, 25, 25, 27, 27) (RS): Working colors as indicated by the chart, *k1, k2tog to last 2 sts, k2. 82 (88, 94, 100, 106, 112) sts.

Work 1 (1, 1, 1, 3, 3) more rows.

For sizes 4, 8, 10, 14 only, Row 27 (-, 27, 27, -, 31) (RS). Working colors as indicated by the chart, *k 4 (3, 4, 4, -, 4), k2tog, repeat from * to last 4 (3, 4, 4, 4, -, 4) sts, k remaining sts. 69 (-, 79, 84, -, 94) sts.

For size 6 only, Row 27 (RS): k4, [k2tog, k3] 16 times, k4. 72 sts.

For size 12 only, Row 31 (RS): k7, [k2tog, k4] 15 times, k2tog, k7: 90 sts.

From here, continue in CC2 only.

Next row (WS): Purl.



Raise back neck by working short rows:

Row 1 (RS): k 54 (57, 62, 66, 71, 74) sts. Turn.

Row 2 (WS): YO, p 39 (42, 45, 48, 52, 54) sts. Turn.

Row 3: YO, k to 4 sts before the YO. Turn.

Row 4: YO, p to 4 sts before the YO. Turn.

Row 5: YO, k across, working each YO together with the next st as you come to them.

Row 6: p across, working final YO together with the next st as you come to it.

Next row, final decrease (RS): k2 (2, 3, 2, 2, 3), [k2tog, k1] to last st, k1: 47 (49, 54, 57, 61, 64) sts.



Neckband

Switching to smaller needles, work in Seed St for 6 rows. BO all sts in tension even with fabric.

Button Band

With smaller needles and RS facing, rejoin yarn and pick up and knit 2 sts for every 3 rows along left front edge, matching color changes to body using the intarsia method if desired. Work in Seed St for 8 rows. BO all sts. Mark position for 5 (5, 5, 5, 6, 6) buttons evenly along the band to use as reference for buttonhole placement. Buttonhole band: With smaller needles and RS facing, re-

join yarn and pick up and knit 2 sts for every 3 rows along right front edge. Work in Seed St for 3 rows. In 4th row, work each buttonhole as you come to their placement as follows: yo k2tog. Work in Seed St for remaining 4 rows, BO all sts.

Finishing

Graft underarm seams, weave in all ends, sew buttons opposite to button holes. Steam or wet block if desired.

Glossary of Abbreviations

BO bind off (cast off)

CC contract color

CO cast on

dec(s) decrease(s)

inc(s) increase(s)

k knit

k2tog knit two together (right-slanting decrease)

m1 make 1: Insert left needle, from front to back, under strand of yarn which runs between last stitch on left needle and first stitch on right needle; knit this stitch through back loop. 1 stitch increased.

MC main color

p purl

pm place marker

pu pick up

rep repeat

rnd(s) round(s)

RS right side(s)

sm slip marker

ssk slip 2 stitches individually as if to knit, then knit those 2 stitches together through the back loops (left-slanting decrease)

st(s) stitch(es)

St st stockinette stitch

WS wrong side(s)

YO yarn over

Julia Farwell-Clay shares her knit adventures and more patterns at www.juliafarwellclay.com. Please email questions to julia@juliafarwellclay.com.

Technical editing by Kate Atherley; schematic, layout, schematic, and branding by Julie Matthews.

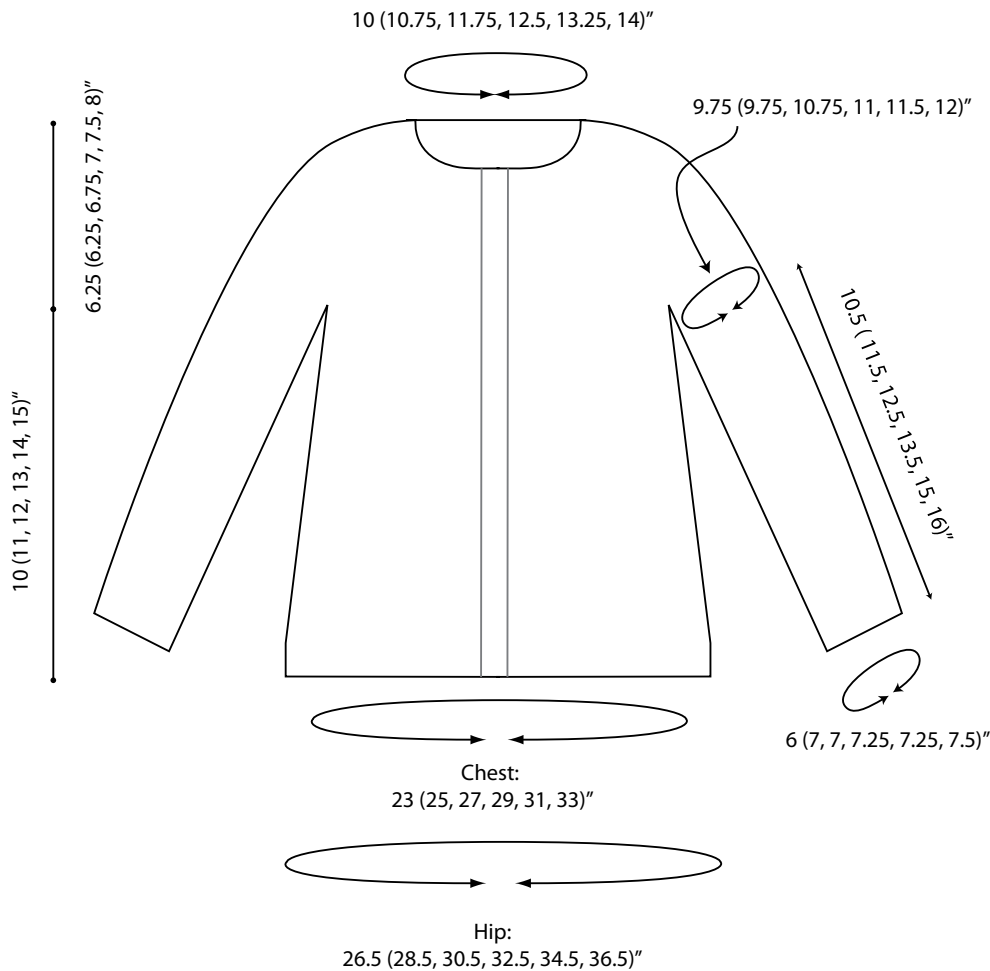


Chart A

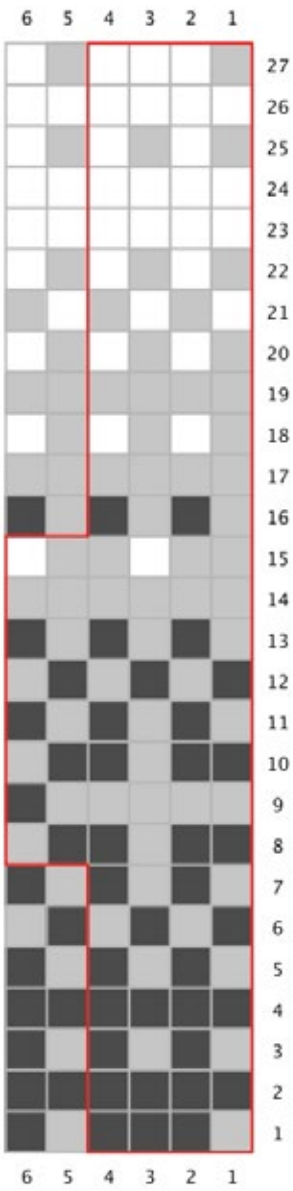
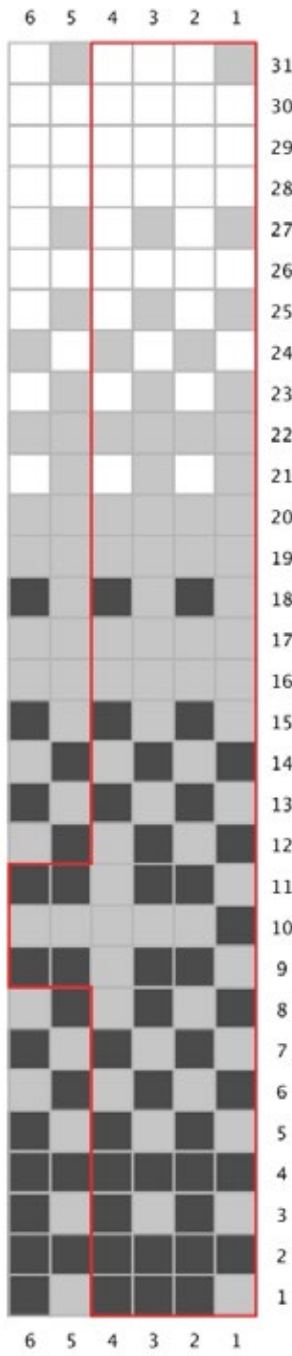
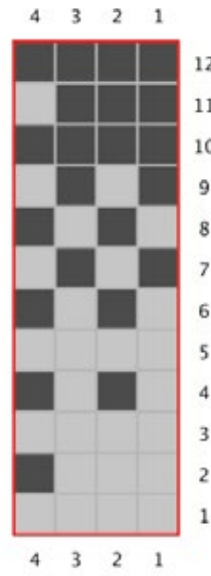






Chart B



Sleeve Chart



Key

-  pattern repeat
-  Main Color
-  Color 2
-  Color 3